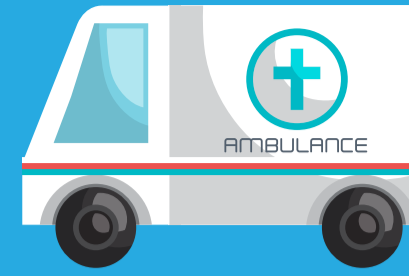


EFFICACY OF AN OBSTETRICAL TRIAGE SYSTEM IN LMICS

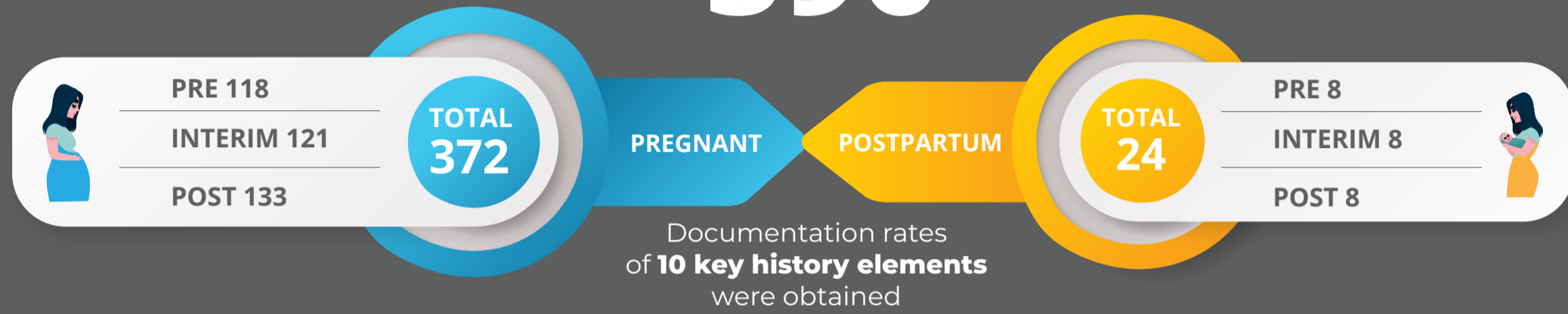
Dr. Lauren Adolph MD, Dr. Richard Pinkrah MD, Dr. David Walawah MD, Dr. Evans Agbeno MD, FWACS, Dr. Betty Anane-Fenin MD, FWACS, Ms. Amewadzi, Ms. Ofori, Janet Slaunwhite, Ms. Merso, Dr. Ronald B. George MD, FRCPC, Dr. Heather Scott MD, FRCSC

Evaluation of the ability of a standardized obstetric emergency triage assessment and treatment (ETAT) system to improve documentation of triage assessment — a proxy measure for triage quality — at Cape Coast Teaching Hospital (CCTH) obstetrical unit.



METHODOLOGY

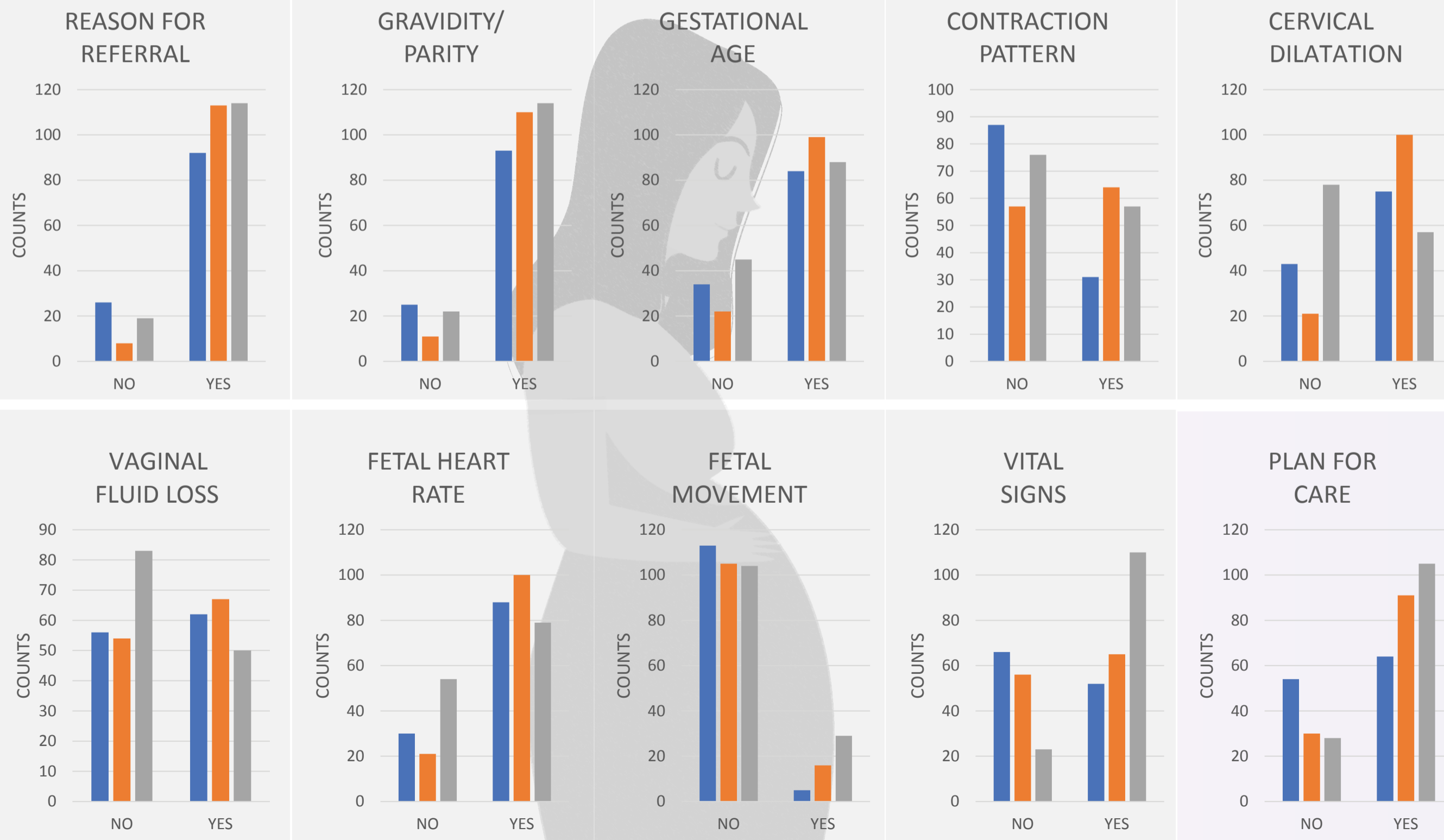
396



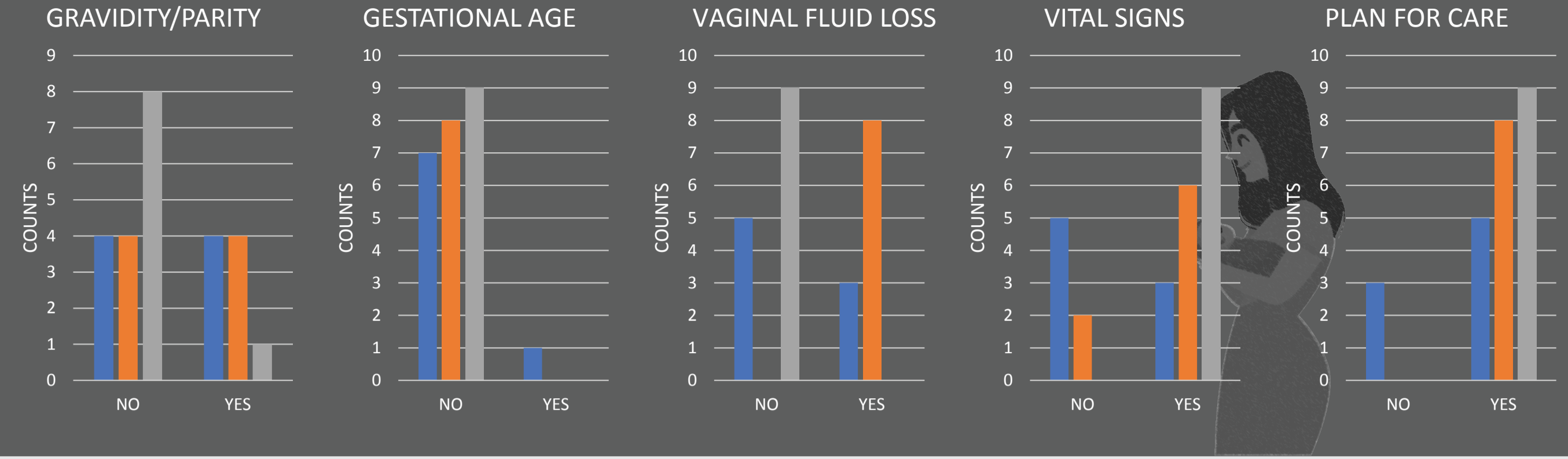
Study of women presenting to CCTH obstetrical unit. Data collected via chart reviews of consecutive women presenting at three discrete intervals:

Prior to ETAT training (**PRE**), April – June 2016
 After initial ETAT training (**INTERIM**), October – December 2017
 After ETAT re-training (**POST**), November 2018 – January 2019

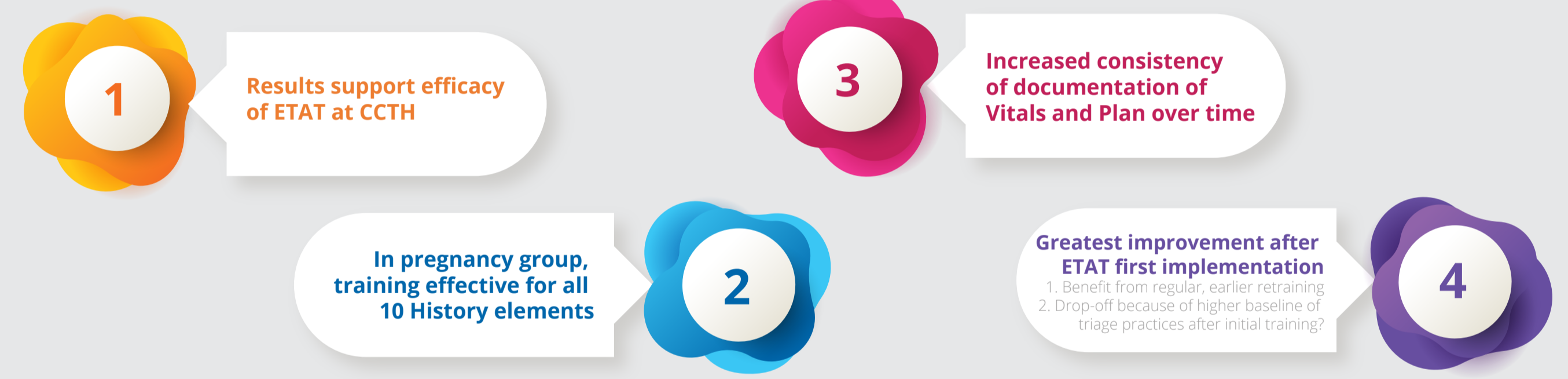
PREGNANCY GROUP



POSTPARTUM GROUP



DISCUSSION



ONE-WAY ANOVA COMPARISON OF DOCUMENTATION RATE OF ALL HISTORY ELEMENTS

